

# **SR 376 PARKWAY WEST PRESERVATION PROJECT**

## **TRAFFIC CONTROL & INCIDENT MANAGEMENT PLAN**

SYCAMORE ROOM GREEN TREE MUNICIPAL CENTER

MARCH 21, 2025, 10:30AM

10 W. MANILLA AVE, PITTSBURGH, PA 15220

Assistant Construction Engineer – Michael Adams, P.E.  
Inspector In Charge - Bob Yarup



# PROJECT OVERVIEW: SR 376-A79

- **Contract Value:** \$12,600,000
- **Contractor:** Northeast Paving
- **Notice to Proceed:** July 29, 2024
- **Current Completion:** January 12, 2026



- Mark Spruill, Project Engineer
- Robert Griffen, Project Manager
- Tony Schultz, Superintendent
- Tucker Slatosky, Traffic Supervisor
- Steve Durbin and Tyler Beck Safety Officers





# PROJECT OVERVIEW: SR 376-A79

## Location

- The project is located on I-376 in Robinson and Collier Townships, Allegheny County.
- ~ 2.5 miles, starting at the Ridge Road Interchange (Exit 61) to ~ 500 ft just east of the I-79 / I-376 Interchange





# PROJECT OVERVIEW: SCOPE OF WORK

- Weeknight Restrictions – 9pm to 5am
- Weekend Restrictions:
  - ❖ As needed nightly - 9pm Saturday to 7am Sunday
  - ❖ Single lane - 9pm Friday to 5am Monday
- SR 8038 Ramp Closures – Concrete shoulder work & mill/pave
  - ❖ Ramp B - Ramp from Boyce Rd. to I-376 EB
  - ❖ Ramp C – Ramp from I-376 WB to Campbells Run Rd.



Ramp Closure  
Duration - 91 Days



# PROJECT OVERVIEW: SCOPE OF WORK

- Rehabilitation of I-376 EB & WB Bridges over Boyce Rd.:
  - ❖ Substructure – Boyce Rd. Closure - 3/3/25-6/14/25
    - Expansion Bearings
    - Concrete Repairs / Sealing
    - Painting of Superstructure Steel
  - ❖ Superstructure – 4 weekend Single Lane Restrictions – June / July (9pm Friday to 5am Monday)
    - Compression Seals and Neoprene Strip Seal Glands
    - Repair Concrete Bridge Approach Slabs
    - Concrete Deck Repairs and Latex Overlay
    - Sealing of Concrete Deck, Approach Slabs, and Barrier



# PROJECT OVERVIEW: SCOPE OF WORK

## ➤ Preservation of 2 ramps at I-79/376 Interchange

- ❖ Ramp G - Exit from I-376 EB to I-79 NB
- ❖ Ramp H - Exit from I-79 SB to I-376 WB
  - Compression Seals and Neoprene Strip Seal Glands
  - Sealing of Concrete Deck, Approach Slabs, and Barrier
  - Cleaning of Drainage System
  - Upgrade of Guide Rail Connections



## ➤ Milling / Pavement Restoration

- 4 Ramps at I-79 / I-376 Interchange – completed in 2024
- EB & WB SR 376 Roadway – to be completed August-October 2025

## ➤ Preservation of 8 existing sign structures

## ➤ Drainage Upgrades

## ➤ Signing Upgrades

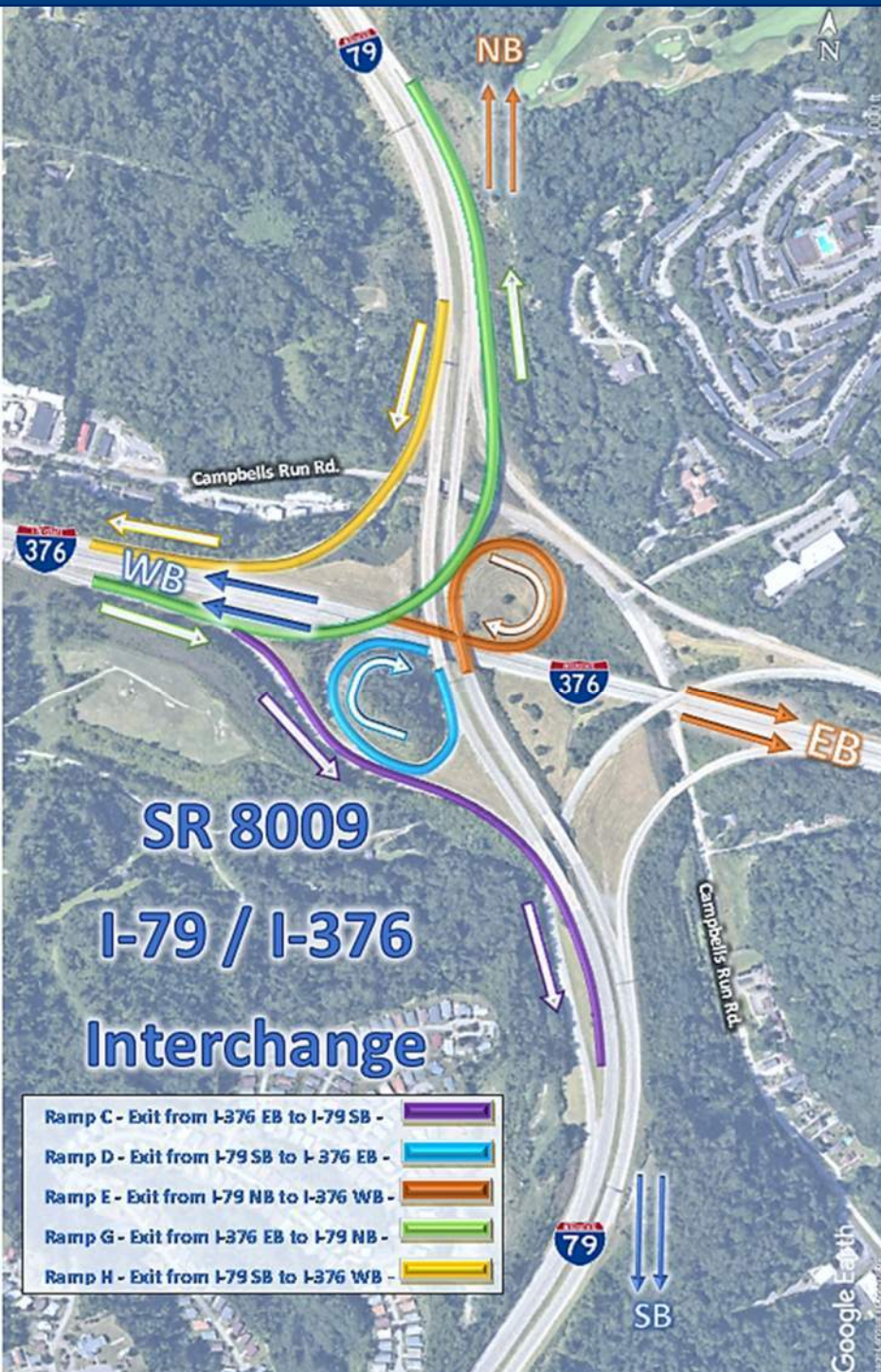
## ➤ Guiderail, Barrier, and New Pavement Markings/Delineation

## ➤ Other Miscellaneous Construction





# PROJECT OVERVIEW: SR 376-A79



## Work Completed in 2024:

### SR 8009 I-79/I-376 Ramps

- ❖ **Ramp C** - Exit from I-376 EB to I-79 SB
- ❖ **Ramp D** - Exit from I-79 SB to I- 376 EB
- ❖ **Ramp E** - Exit from I-79 NB to I-376 WB
- ❖ **Ramp H** - Exit from I-79 SB to I-376 WB





# PROJECT OVERVIEW: SR 376-A79

## Work Completed in 2024:

- SR 8009 I-79/I-376 Ramp Work – 4 ramps
  - ❖ Milling, asphalt resurfacing, shoulder repair, base repair, rumble strips
  - ❖ Drainage improvements, guiderail updates, signing replacement and pavement marking installation





# PROJECT OVERVIEW: SR 376-A79

## 2025 Work:

- Rehabilitation of Bridges on I-376 EB & WB over Boyce Rd.
  - Substructure – Boyce Rd. Closure -3/3/25 to 6/14/25
  - Superstructure – June/July - Weekends, 9pm Friday to 5am Monday
    - ❖ Single Lane Restrictions over 4 Weekends
- I-376 EB and WB Roadway
  - Concrete base repairs near I-79 Interchange
  - Barrier Replacement
  - Asphalt Milling / Paving – Weeknights  
(9pm to 5am Mon-Fri) and (9pm to 7am Sat-Sun)



# CONTACT INFORMATION



## Northeast's Contacts:

- Tucker Slatosky, Traffic Supervisor – 412-303-3954
- Tony Schultz, Superintendent – 412-287-4115
- Robert Griffen, Project Manager – 724-557-7935
- Mark Spruill, Project Engineer – 412-738-5561



## PennDOT Contacts:

- Robert Yarup, Inspector-In-Charge - 412-738-4275
- Sam Dabaldo – CDM Smith - 703-586-8781
- Michael Adams, P.E. , Assistant Construction Engineer - 412-429-3813
- PennDOT Traffic Management Center (TMC) - 24/7 – 412-429-6030





# TRAFFIC FLOW PHASE - 2025

- Current Restriction: Boyce Rd. closed 3/3/25 to 6/14/25
- Day and Night Lane Restrictions on I-376 Parkway West EB & WB
- Overnight Closures on two I-79 Interchange Ramps
- As needed weekend lane closures on I-376 Parkway West EB & WB
- Work Zone Speed Safety Cameras (WZSSC)
- State Police presence during night work
- Two lanes will be maintained in each direction except during phased bridge deck work over Boyce Road when single lanes in each direction will be maintained.
- I-79/I-376 Interchange - All ramps will be open during the day, however when ramps are closed overnight and on weekends, ramp traffic will be detoured.
- SR 8038 Boyce Rd / Campbells Run- Ramps will closed and detoured during phasing on I-376 Parkway West EB and WB.



# TRAFFIC PHASES – 2025

## S-41780- I-376 over Boyce Rd. – Substructure Work

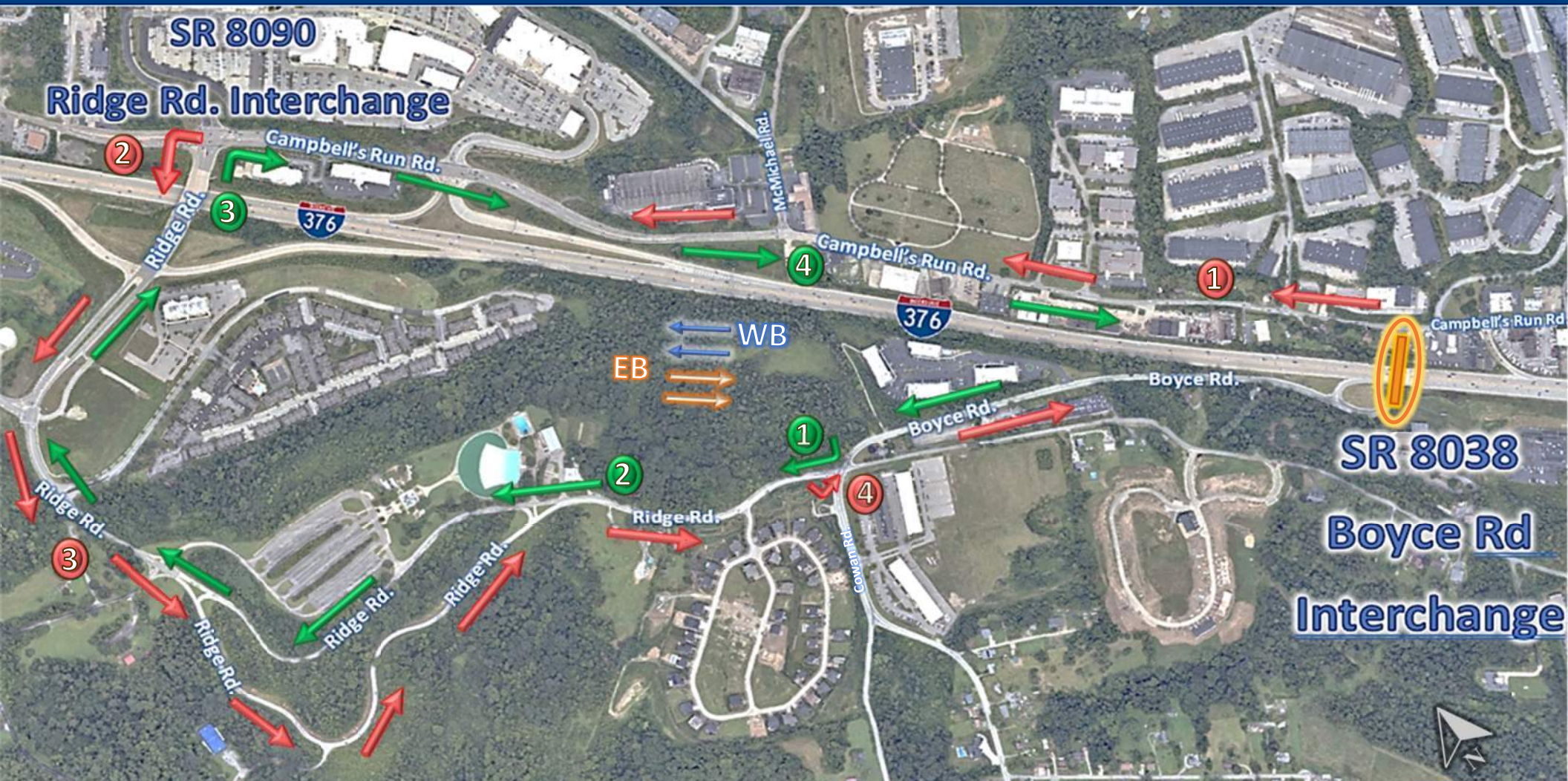
Boyce Rd. Closure – 3/3/25 to 6/14/25

- Expansion Bearings / Pedestals
- Concrete Repairs / Sealing
- Beam Painting
- Boyce Rd. Drainage
- Boyce Rd. Guide rail
- Paving of Boyce Rd.





# SR 3041 BOYCE ROAD CLOSURE / DETOUR



➤ Detour for **Boyce Rd.**: 3/3/25 to 6/14/25

## North of Boyce Rd.

1. Continue on Campbell's Run Rd.
2. Turn Left onto Ridge Road
3. Stay Right to Follow Ridge Road
4. Turn Left onto Boyce Rd.

## South of Boyce Rd.

1. From Boyce Rd, turn Right onto Ridge Rd.
2. Stay Right to Follow Ridge Rd.
3. Turn Right onto Cambells Run Rd.
4. Continue on Cambells Run Rd.





# TRAFFIC PHASES – 2025

## S-41780- I-376 over Boyce Rd. – Superstructure Work

SR 8038 Ramps – 91 Day Closure

I-376 EB & WB - Phase 1- Weekday / Weekend - (two 11' lanes, 1' shld.)

I-376 EB & WB - Phase 2A – Weekend - (one 13' lane EB) (two 11' lanes, 1' shld. WB)  
Phase 2B - Weekend - (one 13' lane EB & WB)

I-376 EB & WB - Phase 3A – Weekend - (one 13' lane EB) (two 11' lanes, 1' shld. WB)  
Phase 3B - Weekend - (one 13' lane EB & WB)



- Weekend restrictions - 9pm Fri to 5am Mon.
- Detours of Ramps





# SR 8038 BOYCE ROAD RAMP CLOSURE / DETOUR



➤ Detour for **Ramp from Boyce Rd. to I-376 EB**: 91 Day Closure

## North of Boyce Rd.

1. Continue on Campbell's Run Rd.
2. Turn Left onto Ridge Road
3. Turn Left onto Ramp to I-376 EB

## South of Boyce Rd.

1. Continue on Boyce Rd.
2. From Boyce Rd., Turn Right onto Ridge Rd.;  
From Cowan Rd., Turn Left onto Ridge Rd.
3. Stay Right to Follow Ridge Rd.
4. Turn Right onto Ramp to I-376 EB





# EXIT 62 TO CAMPBELL'S RUN CLOSURE / DETOUR



➤ Detour for Exit 62 - **Ramp from I-376 WB to Campbell's Run Rd.:**  
91 Day Closure

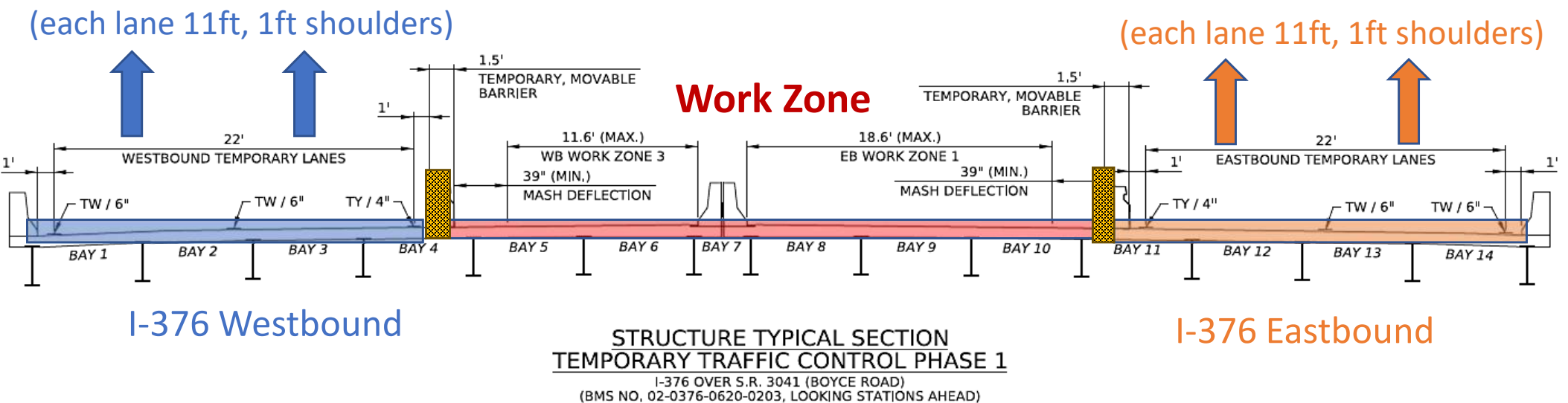
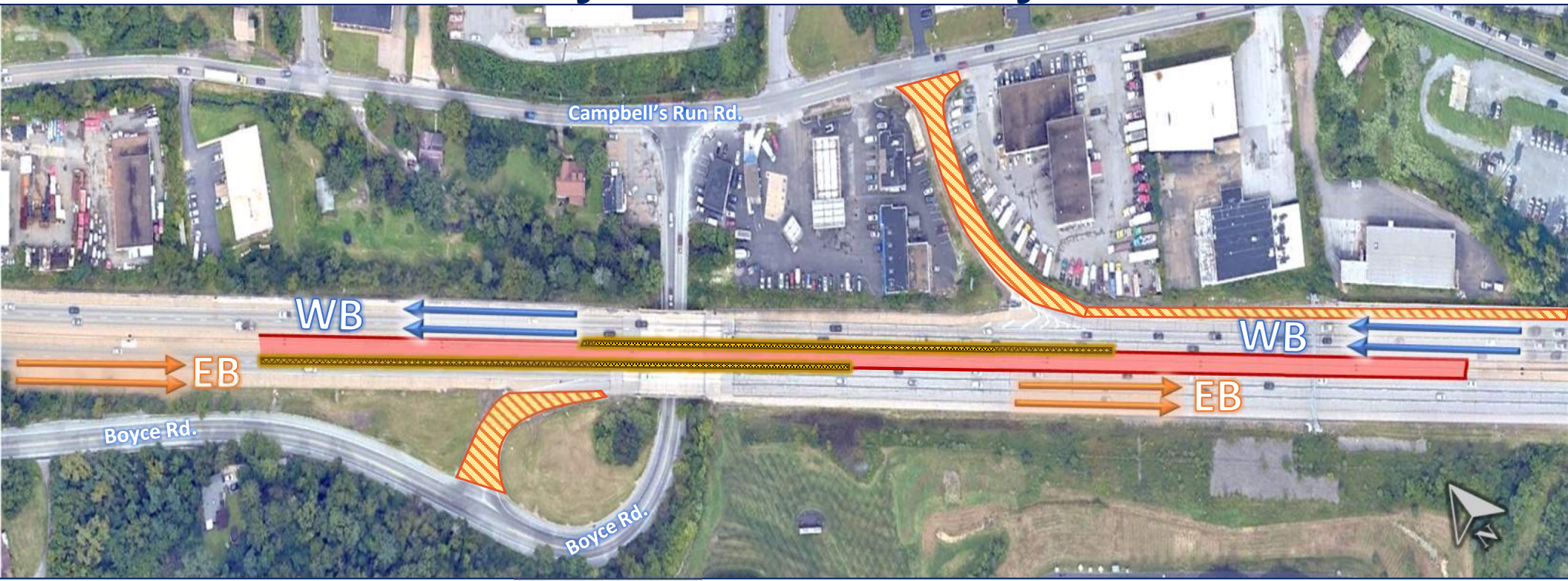
1. Continue on I-376 WB
2. Take Exit 61 to Ridge Road
3. Turn Left onto Campbell's Run Rd.





# TRAFFIC PHASE 1- JUNE/JULY

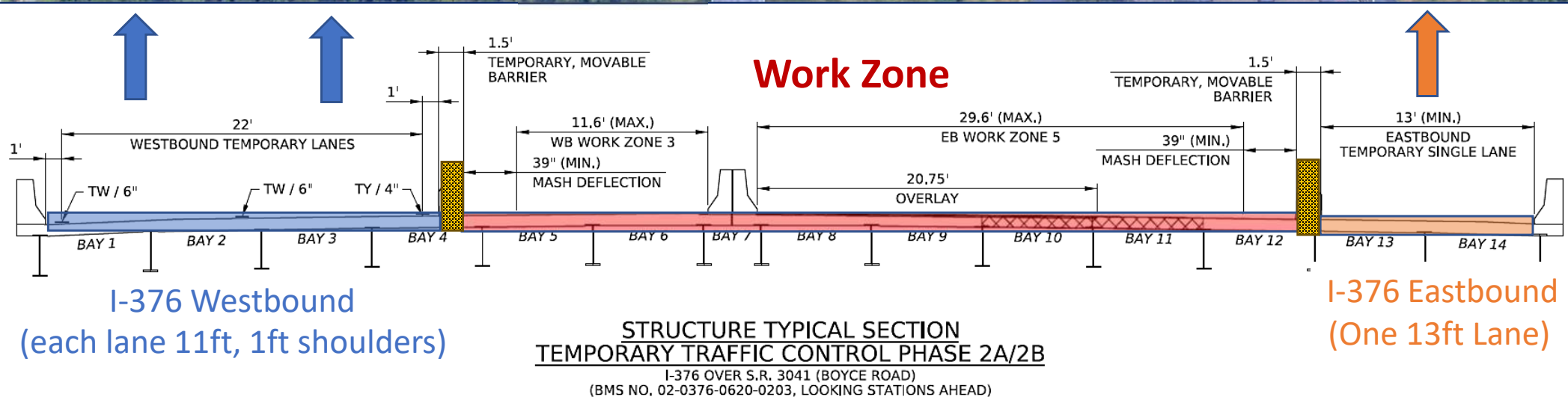
**S-41780- I-376 over Boyce Rd. – Weekdays / Weekends**





# TRAFFIC PHASE 2A- JUNE

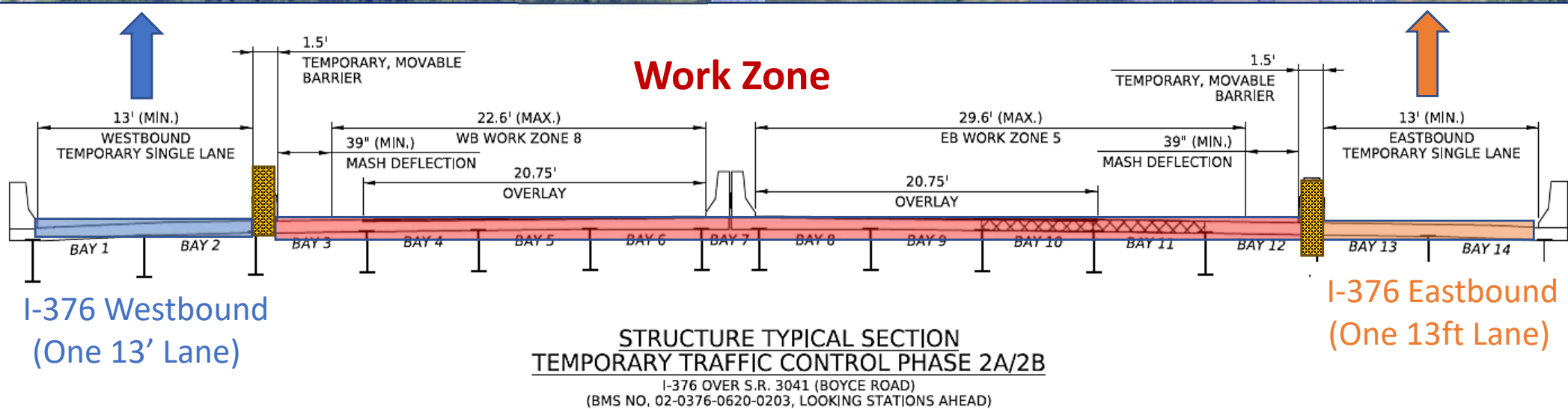
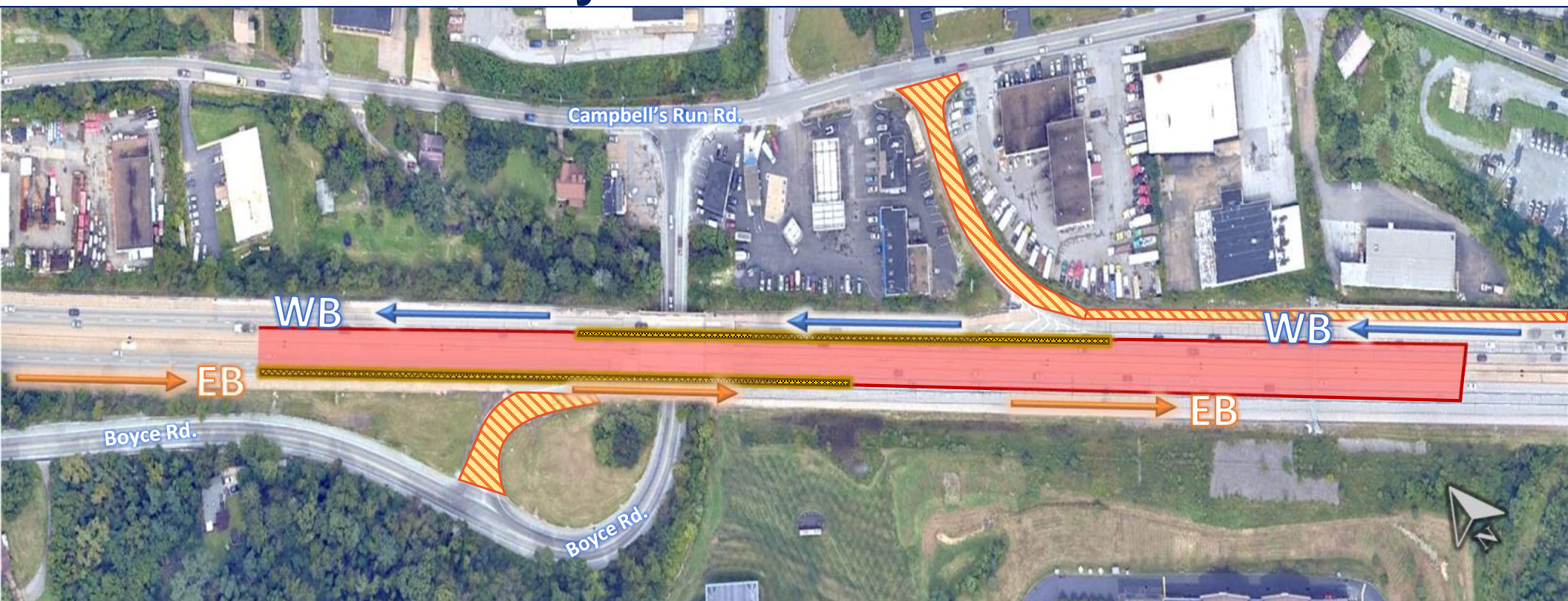
**S-41780- I-376 over Boyce Rd. – 1 Weekend**





# TRAFFIC PHASE 2B- JUNE

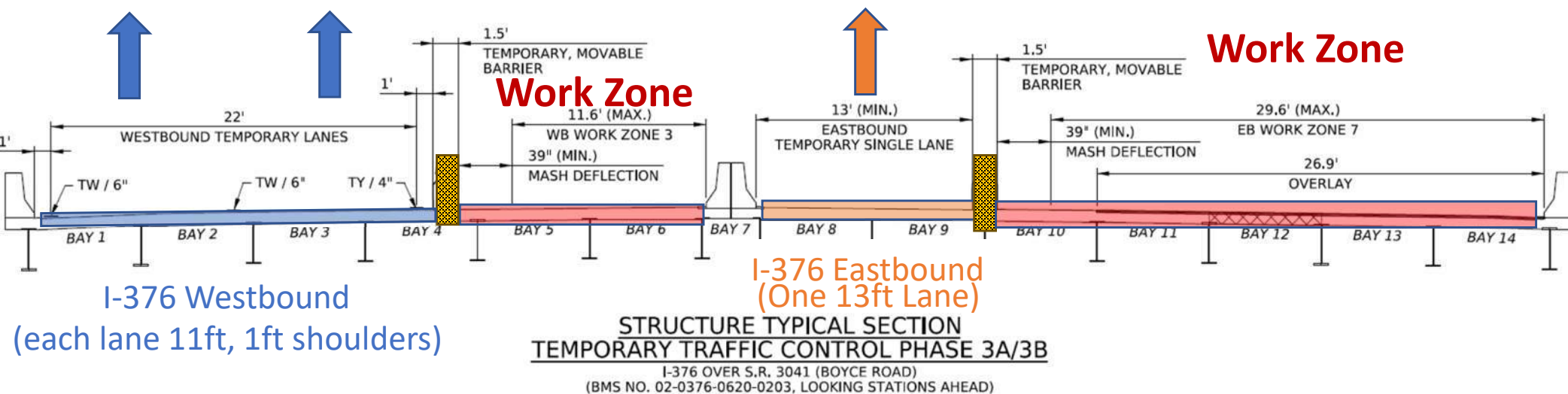
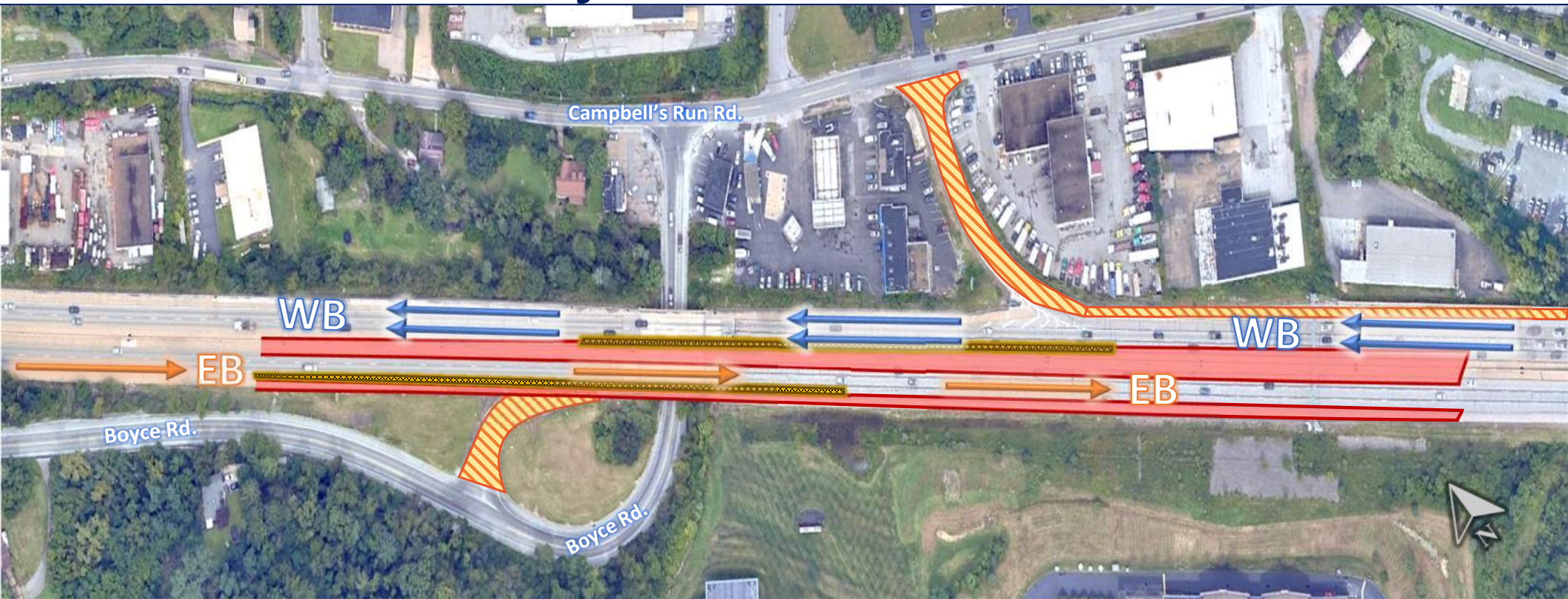
**S-41780- I-376 over Boyce Rd. – 1 Weekend**





# TRAFFIC PHASE 3A- JULY

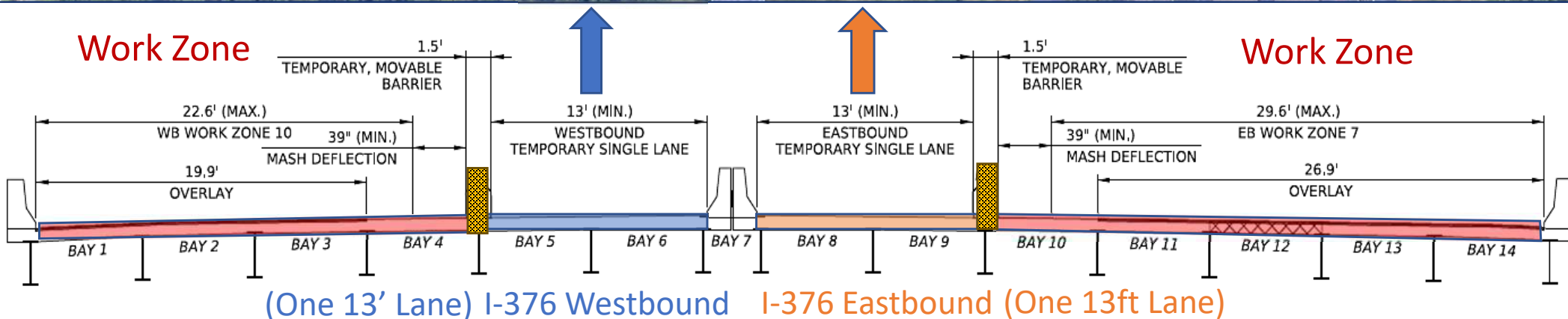
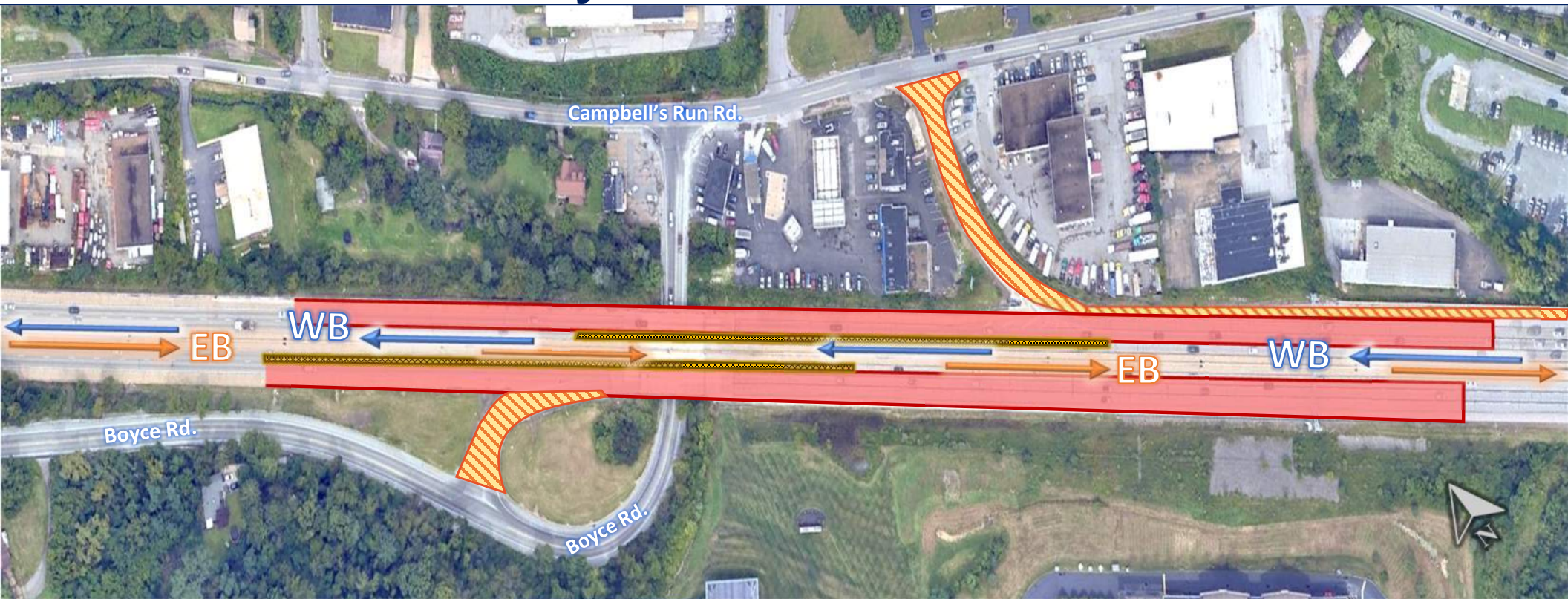
**S-41780- I-376 over Boyce Rd. – 1 Weekend**





# TRAFFIC PHASE 3B- JULY

**S-41780- I-376 over Boyce Rd. – 1 Weekend**



STRUCTURE TYPICAL SECTION  
TEMPORARY TRAFFIC CONTROL PHASE 3A/3B

I-376 OVER S.R. 3041 (BOYCE ROAD)  
(BMS NO. 02-0376-0620-0203, LOOKING STATIONS AHEAD)



# SR 8009 RAMPS - SEPTEMBER



Exit Ramp from I-376 EB to I-79 NB

Exit Ramp from I-79 SB to I-376 WB

- Work to Include - Compression Seals and Neoprene Strip Seal Glands, Sealing , Cleaning of Drainage System, Guiderail updates
- Paving of **Ramp G** – Full overnight closure
- Detoured overnight and on weekends as needed





# SR 8009 INTERCHANGE RAMP CLOSURE / DETOUR



➤ Detours for **Exit Ramp from I-376 EB to I-79 NB** ; **Exit Ramp from I-79 SB to I-376 WB**:

1. Take I-79 SB toward Washington
2. Take Exit 57 to Carnegie
3. Turn Left onto West Main St.
4. Take I-79 NB toward Erie
5. Take Exit 59B for I-376 WB



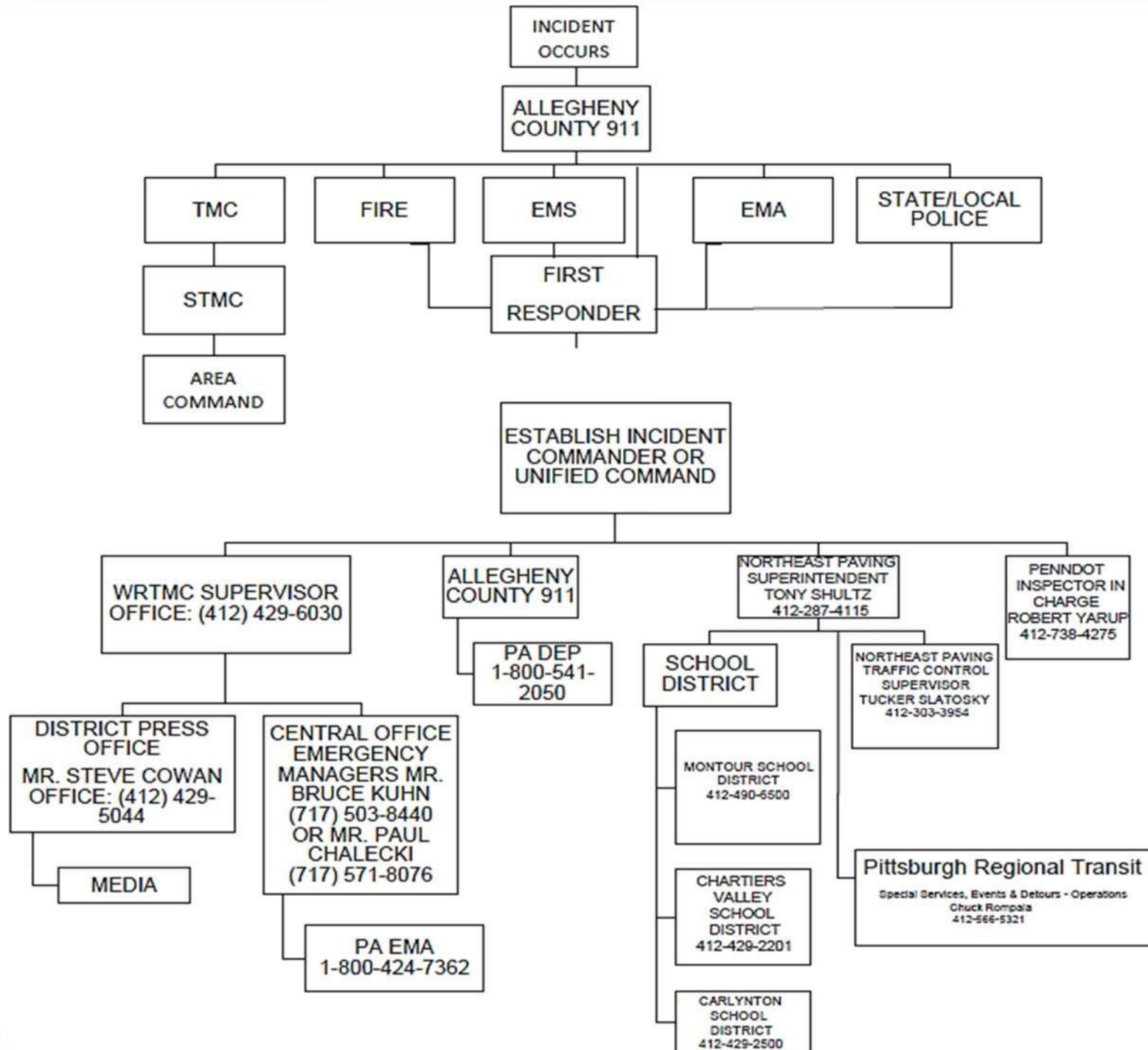
# INCIDENT MANAGEMENT PLAN

- ❖ The Incident Management Plan has been developed to ensure safe, fast and efficient resolution in the event that an incident should occur during construction within the State Route 0376 project limits, roughly from SR 60 to SR 79. This plan has been developed to consider the various response agencies procedures to maximize their efforts if an incident would occur within the project limits.
- ❖ Coordination among all involved will be required to ensure a safe and efficient resolution to the incident. The procedures, guidelines and requirements presented in this plan are not intended to replace individual agency procedures with regard to emergency responses, rescue and recovery at the incident location. The intent is to minimize road closings as a result of an incident and to expedite response to that incident.
- ❖ Please verify Contact Information on page 5-7 of plan.

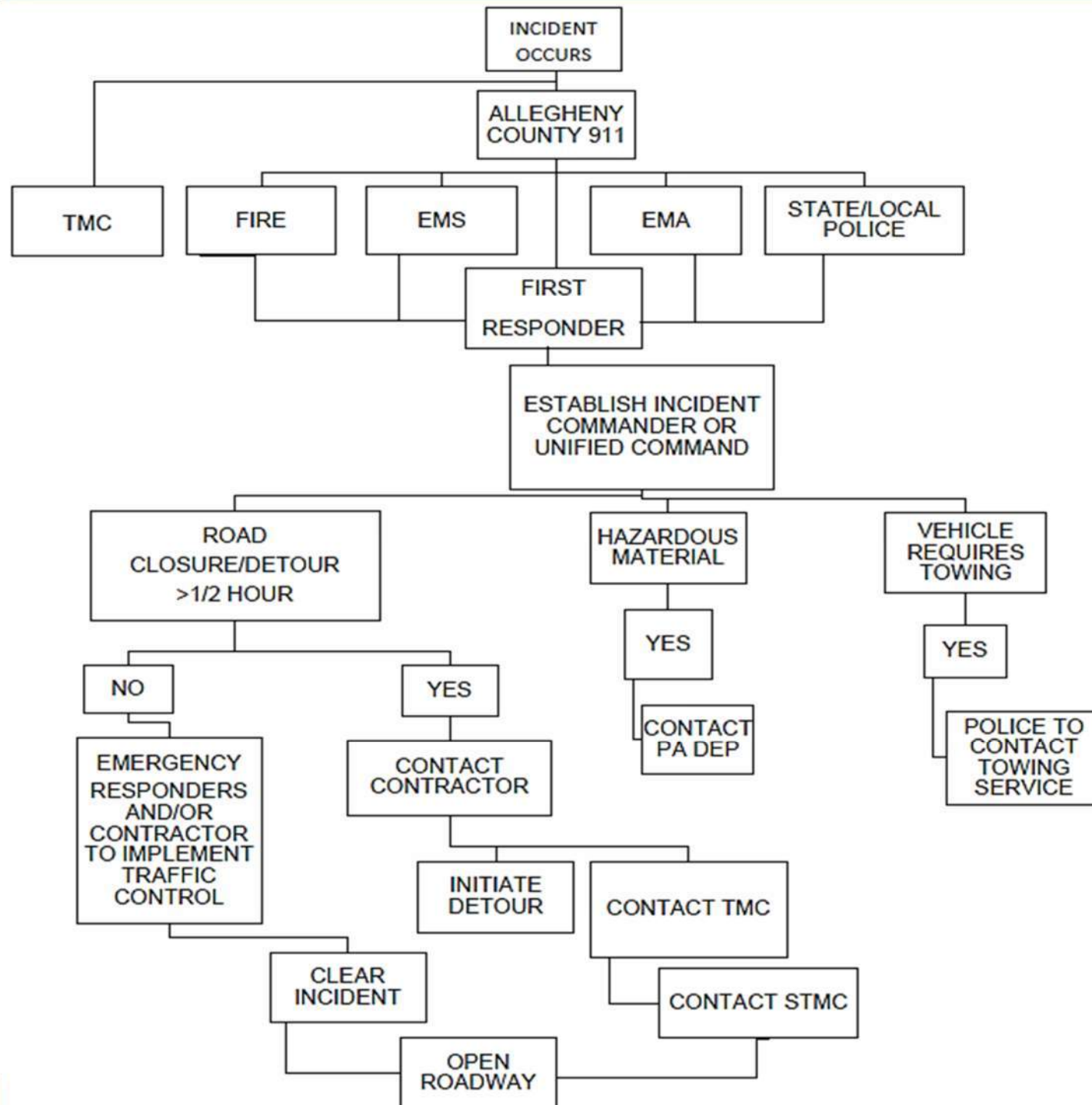




# IMP COMMUNICATION PROTOCOL



# IMP INCIDENT CLEARANCE PROTOCOL





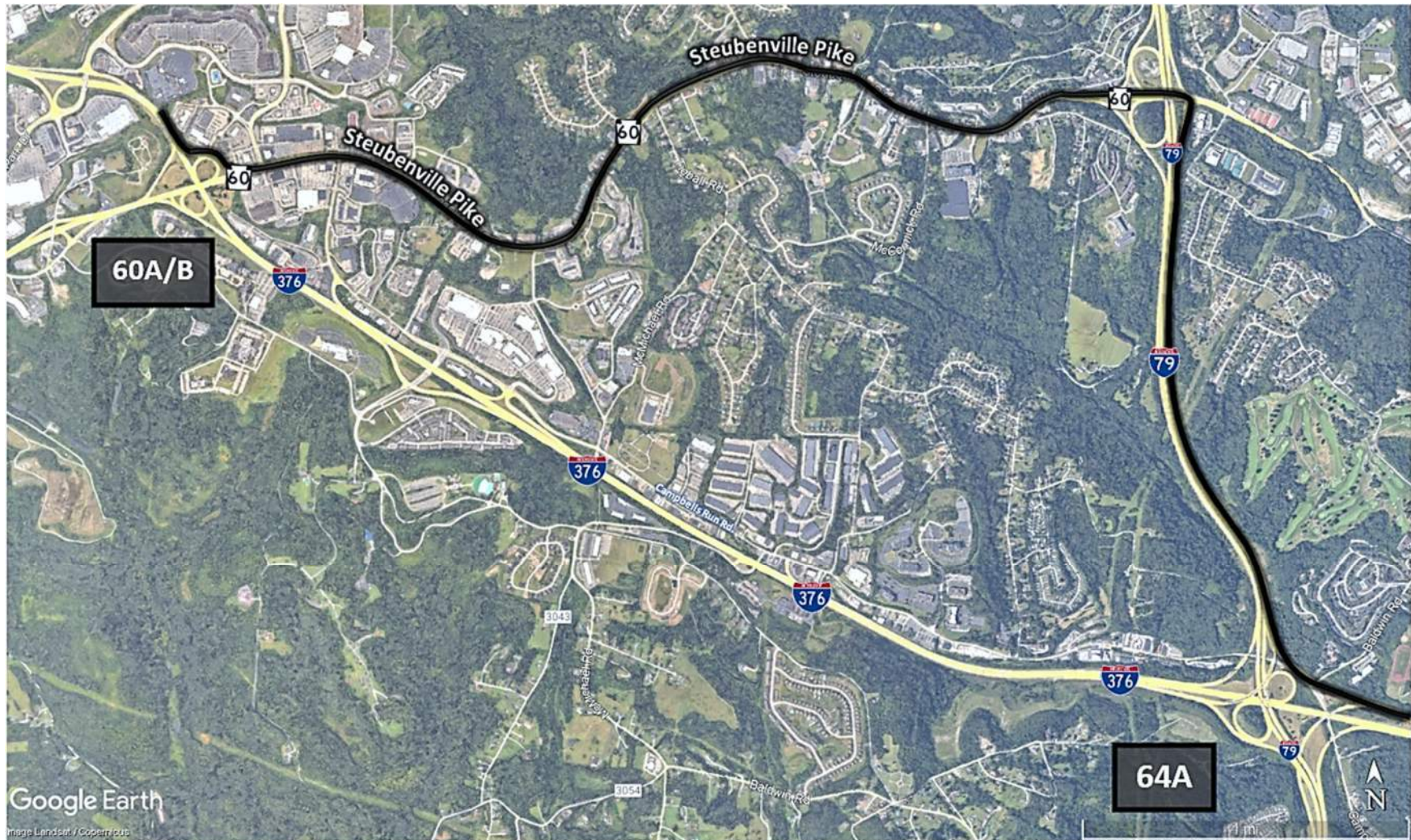
# EMERGENCY DETOUR ROUTES

- PennDOT has developed pre-established Emergency Detour Routes for all limited access freeways in Engineering District 11 (Allegheny, Beaver, and Lawrence Counties).
- These Routes have been prepared with the assumption that an event has occurred on a particular section of freeway of such a severe nature so as to mandate a total closure of the freeway in at least one direction.
- It must be stressed that in almost all cases the Emergency Detour Route will experience severe traffic congestion problems during most of the day with acute problems occurring in the morning and evening peak periods.
- Therefore, during any emergency, every effort must be made to solicit local and state police assistance and to reopen at least one lane of the freeway as soon as possible and to even consider constructing crossovers if the closure will be long term.
- These Emergency Detour Routes can be found on the PennDOT District 11 website.
- <https://www.dot.state.pa.us/public/Districts/District11/internet/EMERGENCYDETOURROUTE.pdf>



# EMERGENCY DETOUR ROUTES

Exit 64A (I-79) to Exit 60A/B (US22/30 East) – Westbound Black Detour



**Black – Exit 64A to I-79NB – (R) Exit 60 - (L) PA 60 NB – (R) I-376 WB**

## **Municipalities Affected**

Robinson Township ; Collier Township

911 Dispatch Numbers:

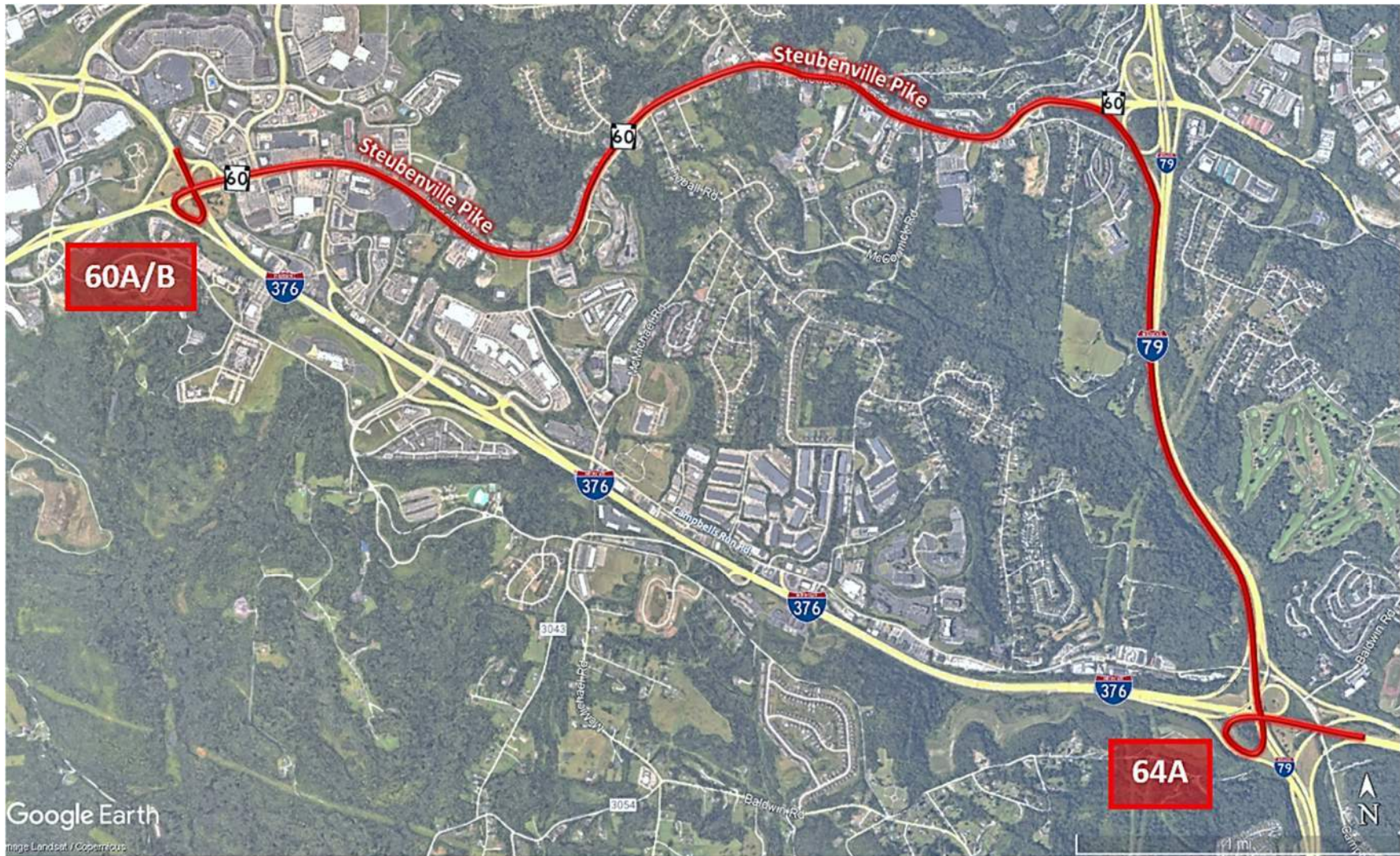
Allegheny County 911: (412) 473-3056 or (412) 473-3000





# EMERGENCY DETOUR ROUTES

Exit 60A/B (US22/30 East) to Exit 64A(I-79) – Eastbound **Red Detour**



**Red** – (R) Exit 60 B to PA 60 SB - (R) I-79 SB – Exit 59A I-376 EB

## **Municipalities Affected**

Robinson Township ; Collier Township

911 Dispatch Numbers:

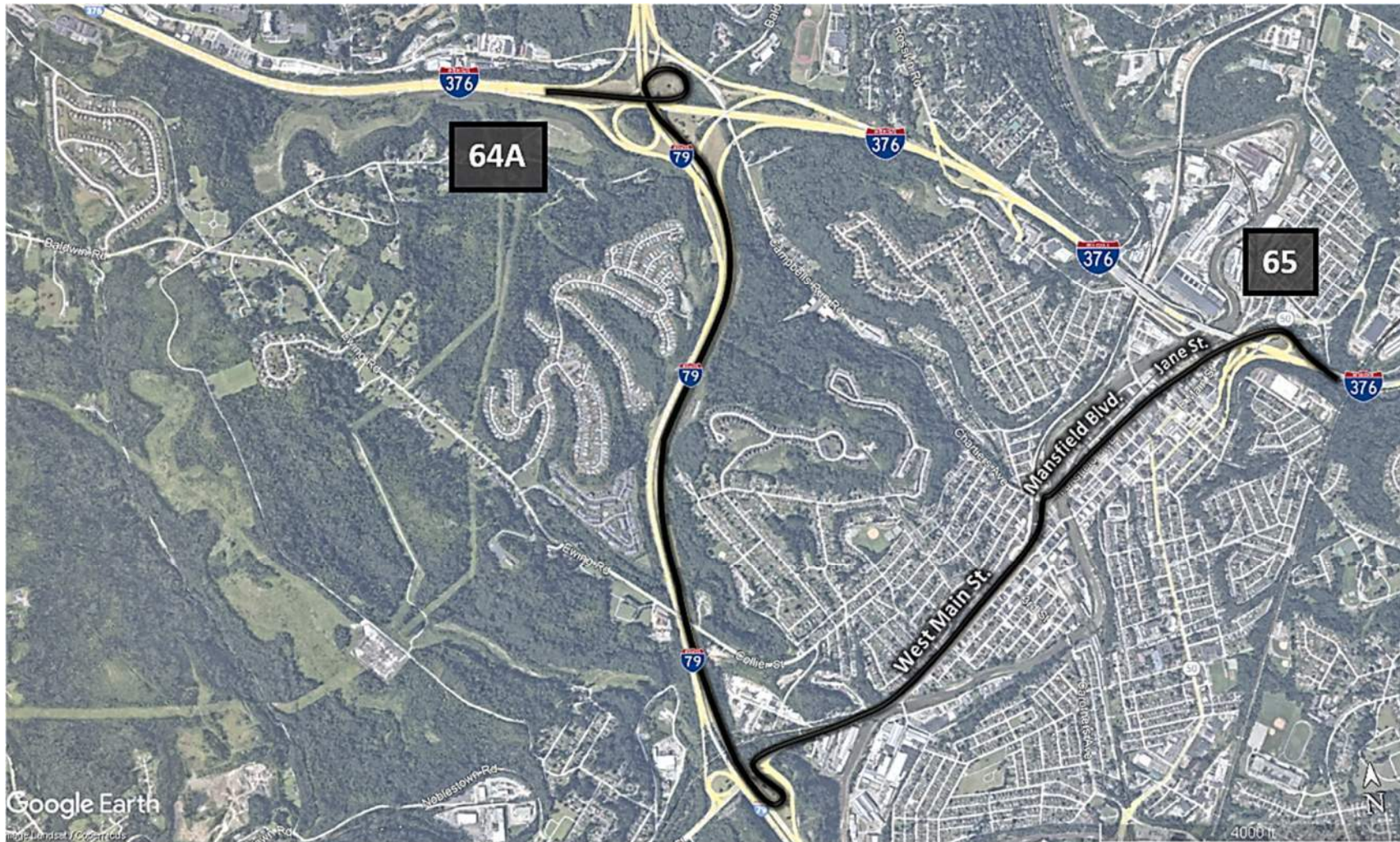
Allegheny County 911: (412) 473-3056 or (412) 473-3000





# EMERGENCY DETOUR ROUTES

Exit 65 (Carnegie / Heidelberg) to Exit 64A (I-79) – Westbound Black Detour



**Black** – Exit 65 to Jane St.- Mansfield Blvd. – West Main St. – (R) I-79 NB to I-376 WB

## **Municipalities Affected**

Carnegie Borough, Collier Township, Robinson Township ; Scott Township

911 Dispatch Numbers:

Allegheny County 911: (412) 473-3056 or (412) 473-3000





# EMERGENCY DETOUR ROUTES

Exit 64A (I-79) to Exit 65 (Carnegie / Heidelberg) – Eastbound **Red Detour**



**Red** – (R) Exit 64 A to I-79 SB - (R) Exit 57 – (R) West Main St. – Mansfield Blvd. - (R) Chestnut St. – (L) Academy St.

## Municipalities Affected

Carnegie Borough, Collier Township, Robinson Township ; Scott Township

911 Dispatch Numbers:

Allegheny County 911: (412) 473-3056 or (412) 473-3000





# FREEWAY SERVICE PATROL

## Freeway Service Patrol (FSP)

- Freeway Service Patrol (FSP) of I-376 is provided by PennDOT.
- The FSP assists motorists involved in accidents, moving disabled vehicles, assist 1st responders & clear debris from the roadway to keep traffic moving freely.
- FSP vehicle on patrol Monday through Friday from 6am to 9am and then 3pm to 6pm.
- Any incident needing FSP response is to be reported to the District Traffic Management Center: **412-429-6030**





# STAY INFORMED OF PROJECT CHANGES

- **Project Specific Press Releases:**

- Subscribe by emailing [stcowan@pa.gov](mailto:stcowan@pa.gov)
- Place “Subscribe – Parkway West” in subject line

- **Project Web Sites:**

- [www.pa.gov/agencies/penndot/regional-offices/district-11](http://www.pa.gov/agencies/penndot/regional-offices/district-11)
- Select “View District 11 Projects” link
  - Select “Allegheny County”
  - Select “ I-376 Parkway West – Preservation Project”

- **511PA**

- *Motorists can check conditions on more than 40,000 roadway miles, including color-coded winter conditions on 2,900 miles, by visiting [www.511PA.com](http://www.511PA.com)*
- *Free and available 24 hours a day, provides traffic delay warnings, weather forecasts, traffic speed information, and access to more than 950 traffic cameras.*
- *Available through a smartphone application for iPhone and Android devices, by calling 5-1-1, or by following regional twitter alerts accessible on the 511PA website.*



# FOLLOW PENNDOT



[www.PennDOT.gov](http://www.PennDOT.gov)



[www.DMV.pa.gov](http://www.DMV.pa.gov)



PennsylvaniaDepartmentofTransportation



PennDOTNews



PennsylvaniaDOT



PennDOTSec



/company/PennDOT



PennDOTSec



PennsylvaniaDOT

## THANK YOU – QUESTIONS